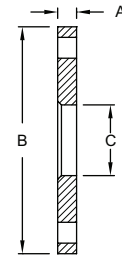


Unpolished - Flanges

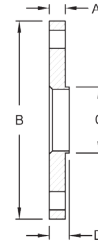
Slip-On 150# - B38SL

Tube OD	Dimensions			Number / Diameter Bolt Holes	Bolt Circle	304 Stainless Steel	316L Stainless Steel
	A	B	C			Part #	Part #
1"	.375"	4.250"	1.063"	4/.625"	3.125"	B38SL-G100	B38SL-R100
1½"	.375"	5.000"	1.563"	4/.625"	3.875"	B38SL-G150	B38SL-R150
2"	.437"	6.000"	2.063"	4/.750"	4.750"	B38SL-G200	B38SL-R200
3"	.500"	7.500"	3.063"	4/.750"	6.000"	B38SL-G300	B38SL-R300
4"	.562"	9.000"	4.063"	8/.750"	7.500"	B38SL-G400	B38SL-R400
6"	.562"	11.000"	6.063"	8/.875"	9.500"	B38SL-G600	B38SL-R600
8"	.562"	13.500"	8.063"	8/.875"	11.750"	B38SL-G800	B38SL-R800

Sanitary
Fittings

Weld Neck - B38W

Tube OD	Dimensions				Number / Diameter Bolt Holes	Bolt Circle	316L Stainless Steel
	A	B	C	D			Part #
1"	.375"	4.250"	1.000"	.500"	4/.625"	3.125"	B38W-R100
1½"	.375"	5.000"	1.500"	.500"	4/.625"	3.875"	B38W-R150
2"	.500"	6.000"	2.000"	.625"	4/.750"	4.750"	B38W-R200
2½"	.500"	7.000"	2.500"	.625"	4/.750"	5.500"	B38W-R250
3"	.500"	7.500"	3.000"	.625"	4/.750"	6.000"	B38W-R300
4"	.500"	9.000"	4.000"	.625"	8/.750"	7.500"	B38W-R400
6"	.500"	11.000"	6.000"	.625"	8/.875"	9.500"	B38W-R600
8"	.500"	13.500"	8.000"	.625"	8/.875"	11.750"	B38W-R800



- For flange dimensions, diagrams and additional information please reference dixonvalve.com.